

# Asigra v10

## Installation and Support Matrix for Cloud Backup™

\*subject to change without notice

(changes since May 2010 appear in RED)

The Asigra logo consists of the word "Asigra" in a bold, dark blue sans-serif font, followed by a small blue square.

Published: **AUGUST** 2010

**Branded Release**

Confidential

# ASIGRA DS-Client Installation Support (32-bit / 64-bit)

Product	Type	Operating System	Version / Distribution	Database <sup>3</sup>	Support
Grid DS-Client <sup>4</sup> Local OR Remote Installation	Windows Native -or- Virtual Machine	Windows 2003 <sup>1</sup>	- Standard SP1 / SP2 / R2 (x86/x64) or - Enterprise SP1 / SP2 / R2 (x86/x64) or - SBS SP1/SP2 (x86/x64) or - Data Center SP2 (x64)	- MS SQL Server 2005 <sup>2</sup> up to SP3 or - SQL Server 2005 Express SP3  - MS SQL Server 2008 <sup>2</sup> SP1 or - MS SQL Server 2008 <sup>2</sup> SP1 Express	Install & Upgrade
		Windows XP <sup>1</sup>	- Professional SP3 (x86) or - Professional SP2 (x64) or - Media Center SP3 (x86) or - Media Center SP2 (x64) or - Home SP3 <sup>4</sup> (x86)	- SQL Server 2005 <sup>2</sup> Express up to SP3  - MS SQL Server 2008 <sup>2</sup> SP1 or - MS SQL Server 2008 <sup>2</sup> SP1 Express	Install & Upgrade
		VISTA <sup>1</sup>	- Ultimate SP1/SP2 (x86/x64) or - Enterprise SP1/SP2 (x86/x64) or - Home Basic SP1/SP2 (x86/x64) or - Business SP1/SP2 (x86/x64) or - Home Premium SP1/SP2 (x86/x64)	- SQL Server 2005 <sup>2</sup> Express up to SP3 (x86) or - MS SQL Server 2005 <sup>2</sup> SP2/3  - MS SQL Server 2008 <sup>2</sup> SP1 or - MS SQL Server 2008 <sup>2</sup> SP1 Express	Install & Upgrade
		Windows 2008 <sup>1</sup>	- Standard SP1/SP2 (x86/x64) / R2 (x64) or - Enterprise SP1/SP2 (x86/x64) / R2 (x64) or - SBS SP1/SP2 (x64) or - Data Center SP2 / R2 (x64)	- SQL Server 2005 <sup>2</sup> Express up to SP3 (x86) or - MS SQL Server 2005 <sup>2</sup> up to SP3 or - MS SQL Server 2008 <sup>2</sup> SP1 or - MS SQL Server 2008 <sup>2</sup> SP1 Express or - SQL Server 2008 R2 Express	Install & Upgrade
		Windows 7 <sup>1</sup>	- Ultimate (x86/x64) or - Professional (x86/x64) or - Enterprise (x86/x64)	- MS SQL Server 2005 <sup>2</sup> SP3 or - MS SQL Server 2005 <sup>2</sup> SP3 Express or - MS SQL Server 2008 <sup>2</sup> SP1 or - MS SQL Server 2008 <sup>2</sup> SP1 Express	Install
DS-Client (Standalone) Local OR Remote Installation	UNIX Native -or- Virtual Machine	SUSE Linux <sup>1</sup> Native or VMware	- Enterprise Server 9 SP4 (x86) or - Enterprise Server 10 SP2 (x86/x64) or - Enterprise Server 11 (x86/x64) or - Open Enterprise Server SP2 (x86)	- PostgreSQL 8.0, 8.1	Upgrade ONLY
		Red Hat Linux <sup>1</sup> Native or VMware	- Enterprise Linux ES/AS 4 U8 (x86/x64) or - Enterprise Linux ES/AS 5 U4/U5 (x86/x64)	- PostgreSQL 8.2, 8.3	Install & Upgrade
		Mac OS X	- Tiger / 10.4 (G4/G5/x86) - Leopard / 10.5 (x86)  - Snow Leopard / 10.6 (x86)	- PostgreSQL 8.4	Install

<sup>1</sup> Operating System support available for **English and German versions** only

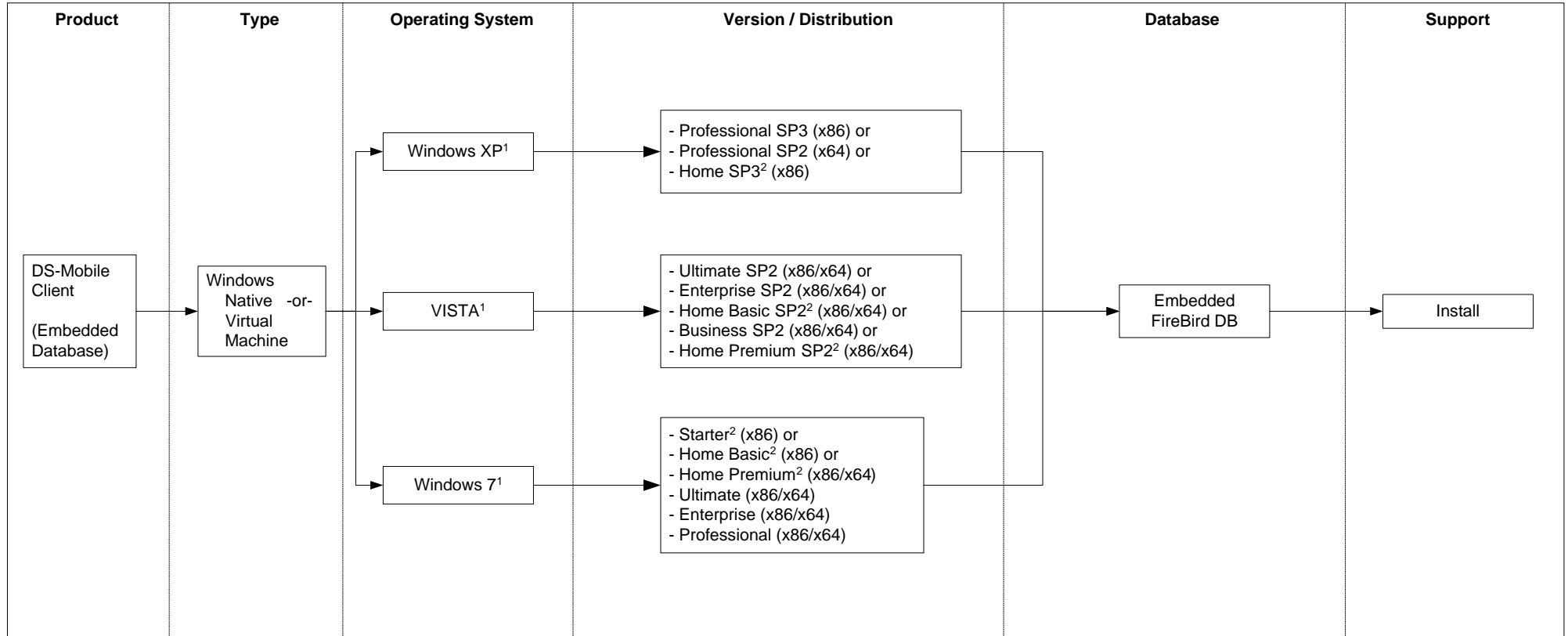
<sup>2</sup> Non-clustered instances of MS SQL Server 2005/2008 for standalone DS-Clients; for Grid DS-Clients, clustered MS SQL Server 2005/2008 is supported

<sup>3</sup> ASIGRA supports MS SQL Server: Enterprise Edition 2005 (SP1/2/3), Standard Edition 2005 (SP1/2/3), Server 2005 Express (SP1/2/3), Enterprise Edition 2008 (SP1), Standard Edition 2008 (SP1), Server 2008 Express (SP1)

<sup>4</sup> Grid DS-Client is not supported on Windows XP Home

**Notes:** - Win32 DS-User installation is supported on all Windows-based platforms on which the Windows DS-Client is supported  
 - Java DS-User installation is supported on all platforms on which the DS-Client (Windows / Linux / Mac) is supported  
 - 32-bit installations are only supported on 32-bit Operating Systems / 64-bit installations are only supported on 64-bit Operating Systems

# ASIGRA DS-Mobile Client Installation Support (32-bit / 64-bit)

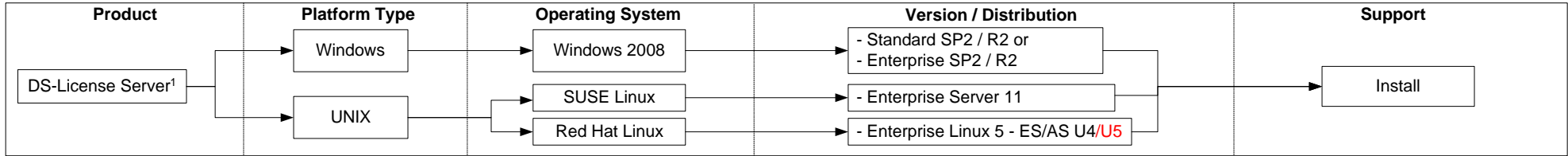


<sup>1</sup> Operating System support available for **English and German versions** only

<sup>2</sup> Mass Deployment via Active Directory not supported due to Microsoft's lack of support for joint accounts on Active Directory.

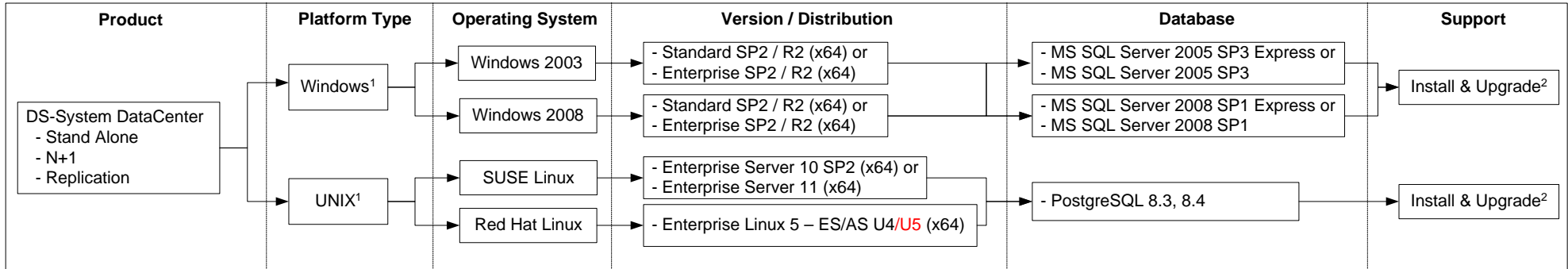
- Notes:**
- DS-Mobile User installation is done together with the DS-Mobile Client on the same machine.
  - DS-Mobile User cannot be installed on a separate machine from the DS-Client service.

## ASIGRA DS-License Server Installation Support



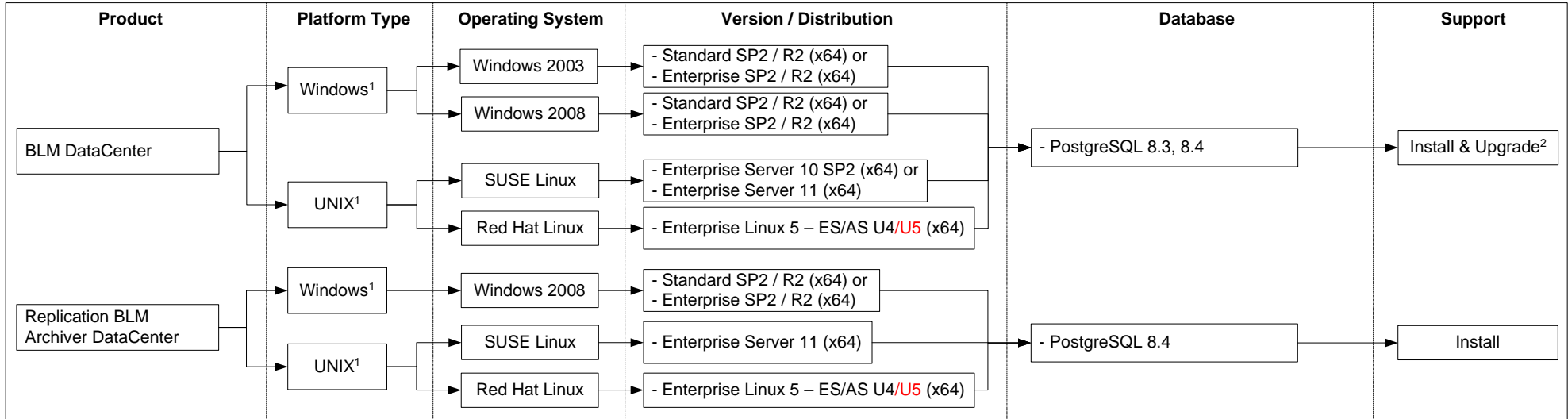
<sup>1</sup> DS-License Server is a 32-bit installation for both 32-bit and 64-bit Operating Systems.  
**Note:** - The installation is supported on physical machines and on Virtual Machines.  
 - Operating System support for English language installations only.

## ASIGRA DS-System DataCenter for DS-License Server (64-bit ONLY)



<sup>1</sup> Operating System support available for **English and German language installations** only  
<sup>2</sup> Direct upgrade from existing (regular) v.9.0 DS-System installations is supported. Direct upgrade from regular v.9.2 / v.10.0 DS-System installations is supported.  
**Notes:** - "DS-System DataCenter" is a specific DS-System installation for use with the DS-License Server.  
 - Any compatible version of the DS-Operator GUI can be used to connect to a DataCenter DS-System (as well as the regular DS-System).  
 - The installation is supported on physical machines and on Virtual Machines.

## ASIGRA BLM Archiver DataCenter for DS-License Server (64-bit ONLY)



<sup>1</sup> Operating System support available for **English and German language installations** only  
<sup>2</sup> Direct upgrade from existing (regular) v.9.0 BLM installations is supported. Direct upgrade from regular v.9.2 / v.10.0 BLM installations is supported.  
**Note:** - "BLM DataCenter" is a specific BLM installation for use with the DS-License Server.  
 - Any compatible version of the BLM GUI can be used to connect to a DataCenter BLM (as well as the regular BLM Archiver).  
 - The installation is supported on physical machines and on Virtual Machines.

## ASIGRA DS-System / DS-Billing Installation Support (64-bit ONLY)

Product	Platform Type	Operating System	Version / Distribution	Database	Support
DS-System - Stand Alone - N+1 - Replication	Windows	Windows 2003 <sup>1</sup>	- Standard SP1 / SP2 / R2 (x64) or - Enterprise SP1 / SP2 / R2 (x64)	- SQL Server 2005 Express <sup>3,5</sup> SP1/2/3 or - MS SQL Server 2005 <sup>2,5</sup> SP1/2/3	Install & Upgrade
		Windows 2008 <sup>1</sup>	- Standard SP1 / SP2 / R2 (x64) or - Enterprise SP1 / SP2 / R2 (x64)	- MS SQL Server 2008 <sup>3</sup> SP1 Express or - MS SQL Server 2008 <sup>2</sup> SP1	Install & Upgrade
	UNIX	SUSE Linux <sup>1</sup>	- Enterprise Server 10 SP2 (x64) - Enterprise Server 11 (x64)	- PostgreSQL 8.2, 8.3, 8.4 <sup>4</sup>	Install & Upgrade
		Red Hat Linux <sup>1</sup>	- Enterprise Linux 4 – ES/AS U8 (x64) - Enterprise Linux 5 – ES/AS U4/U5 (x64)		
DS-Billing	Windows	Windows 2003 <sup>1</sup>	- Standard SP1 / SP2 / R2 (x64) or - Enterprise SP1 / SP2 / R2 (x64)	- SQL Server 2005 Express <sup>3</sup> SP1/2/3 or - MS SQL Server 2005 <sup>2</sup> SP1/2/3	Install & Upgrade
		Windows 2008 <sup>1</sup>	- Standard SP1 / SP2 / R2 (x64) or - Enterprise SP1 / SP2 / R2 (x64)	- MS SQL Server 2008 <sup>3</sup> Express SP1 or - MS SQL Server 2008 <sup>2</sup> SP1	Install & Upgrade
	UNIX	SUSE Linux <sup>1</sup>	- Enterprise Server 10 SP2 (x64) - Enterprise Server 11 (x64)	- PostgreSQL 8.3	Install & Upgrade
		Red Hat Linux <sup>1</sup>	- Enterprise Linux 5 – ES/AS U4/U5 (x64)	- PostgreSQL 8.4 <sup>4</sup>	Install

<sup>1</sup> Operating System support available for **English and German language installations** only

<sup>2</sup> ASIGRA supports MS SQL Server: Enterprise Edition 2005 (SP1/SP2/SP3), Standard Edition 2005 (SP1/SP2/SP3), Enterprise Edition 2008 (SP1), Standard Edition 2008 (SP1)

<sup>3</sup> Intended for TEST Environments only - not for production DS-Systems.

<sup>4</sup> PostgreSQL 8.4 only tested on RedHat Enterprise Linux ES/AS 5 U4, and SUSE Linux Enterprise Server 11

<sup>5</sup> MS SQL Server installations may be standalone or clustered.

- Notes:**
- DS-Operator multi-platform installation is supported on all platforms where the DS-System (Windows or Linux) is supported and also on the corresponding 32-bit version of those platforms.
  - 64-bit installations are only supported on 64-bit Operating Systems.
  - DS-Billing GUI ONLY installation is supported on all platforms where the DS-Billing (Windows or Linux) is supported and also on the corresponding 32-bit version of those platforms.
  - The DS-System installation is only supported on physical machines (not on VMs).

## ASIGRA Web Portal Installation Support (64-bit ONLY)

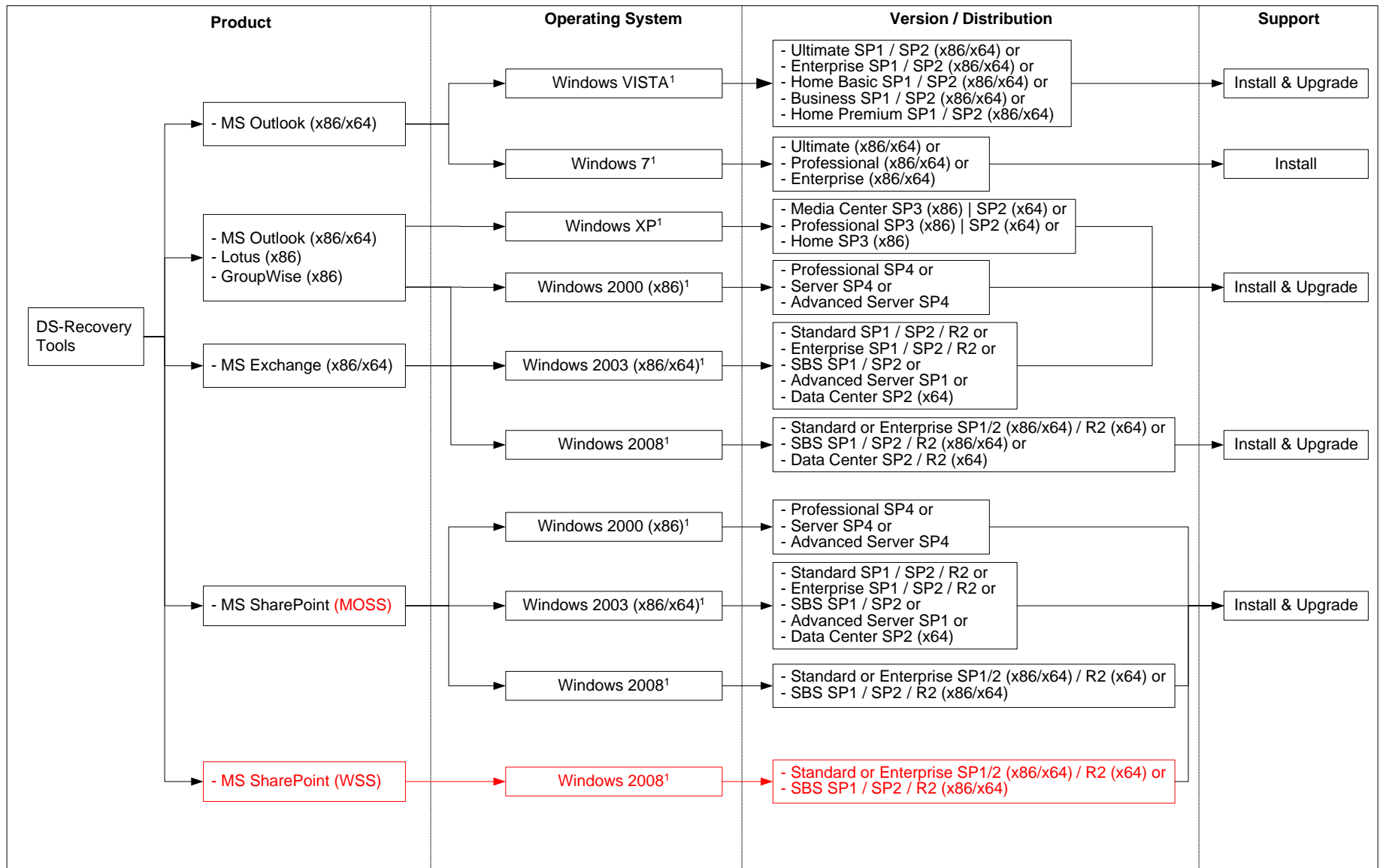
Product	Platform Type	Operating System	Version / Distribution	Database	Web Server	Support
Web Portal	Windows	Windows 2003 <sup>1</sup>	- Standard SP1 / SP2 / R2 or - Enterprise SP1 / SP2 / R2	- PostgreSQL <sup>2</sup> 8.3	- Apache Tomcat 6.0 with Java 1.6	Install & Upgrade
		Windows 2008 <sup>1</sup>	- Standard SP1 / SP2 / R2 (x64) or - Enterprise SP1 / SP2 / R2 (x64)			
	UNIX	SUSE Linux <sup>1</sup>	- Enterprise Server 10 up to SP2 or - Enterprise Server 11	- PostgreSQL <sup>2</sup> 8.4	- Apache Tomcat 6.0 with Java 1.6	Install
		Red Hat Linux <sup>1</sup>	- Enterprise Linux 5 – ES/AS U4/U5			

<sup>1</sup> Operating System support available for **English and German language installations**.

<sup>2</sup> Web Portal installed on a 64-bit Windows machine will be able to use a 32-bit version of PostgreSQL

- Note:**
- Web Portal installation depends on Apache, Java, and PostgreSQL support for x64 and Operating System support for x64.
  - The installation is supported on physical machines and on Virtual Machines.

# ASIGRA DS-Recovery Tools Installation Support (32-bit / 64-bit)



<sup>1</sup> Operating System support available for **English and German versions** only  
**Note:** - The installation is supported on physical machines and on Virtual Machines.

## ASIGRA Backup Lifecycle Management (BLM) Archiver Installation Support (64-bit ONLY)

Product	Platform Type	Operating System	Version / Distribution	Database	Support
BLM Archiver	Windows	Windows 2003 <sup>1</sup>	- Standard SP1 / SP2 / R2 (x64) or - Enterprise SP1 / SP2 / R2 (x64)	- PostgreSQL <sup>2</sup> 8.3	Install & Upgrade
		Windows 2008 <sup>1</sup>	- Standard SP1 / SP2 / R2 (x64) or - Enterprise SP1 / SP2 / R2 (x64)		
	UNIX	SUSE Linux <sup>1</sup>	- Enterprise Server 10 SP2 (x64) or - Enterprise Server 11 (x64)	- PostgreSQL <sup>2</sup> 8.4	Install
		Red Hat Linux <sup>1</sup>	- Enterprise Linux 4 – ES/AS U8 (x64) or - Enterprise Linux 5 – ES/AS U4/U5 (x64)		
Export Counter	Windows	Windows 2008 <sup>1</sup>	- Standard SP1 / SP2 / R2 (x64) or - Enterprise SP1 / SP2 / R2 (x64)		Install & Upgrade
		Windows 2003 <sup>1</sup>	- Enterprise SP1 / SP2 / R2 (x64)		
	UNIX	SUSE Linux <sup>1</sup>	- Enterprise Server 10 SP2 (x64) or - Enterprise Server 11 (x64)		Install & Upgrade
		Red Hat Linux <sup>1</sup>	- Enterprise Linux 5 – ES/AS U4/U5 (x64)		

<sup>1</sup> Operating System support available for **English and German versions** only

<sup>2</sup> PostgreSQL supports only 32-bit version on Windows, even for x64 Operating System. On x64 (64-bit) Windows, the BLM Archiver is a x64 program which uses the x86 (32-bit) PostgreSQL Engine

- Notes:**
- BLM Java GUI installation is supported on all platforms where the BLM Archiver (Windows or Linux) is supported and also on the corresponding 32-bit version of those platforms.
  - BLM Export Counter is licensed by ASIGRA. It can be used to export indexes for the data stored on BLM Archiver. The BLM Export Counter license is a decreasing counter that registers the amount of stored data represented by the indexing information exported by the Export Counter.
  - The BLM Archiver installation is only supported on physical machines (not on VMs).

## ASIGRA DS-Client Monitoring Installation Support (32-bit ONLY)

Product	Operating System	Version / Distribution	Database	Support
DS-Client SLA	Windows 2003 (x86) <sup>1</sup>	- Standard SP1/SP2/R2 or - Enterprise SP1/SP2/R2	- MSDE 2000 - MS SQL Server 2000 SP4	Upgrade
			- SQL Server 2005 Express SP3 - MS SQL Server 2005 SP3 <sup>2</sup>	Install & Upgrade

<sup>1</sup> Operating System support available for **English language installation** only

<sup>2</sup> ASIGRA supports DS-Client SLA running with a DB on MS SQL Server 2005 (Standard / Enterprise) standalone.

**Note:** - The installation is supported on physical machines and on Virtual Machines.

## ASIGRA DS-System Monitoring Installation Support (32-bit ONLY)

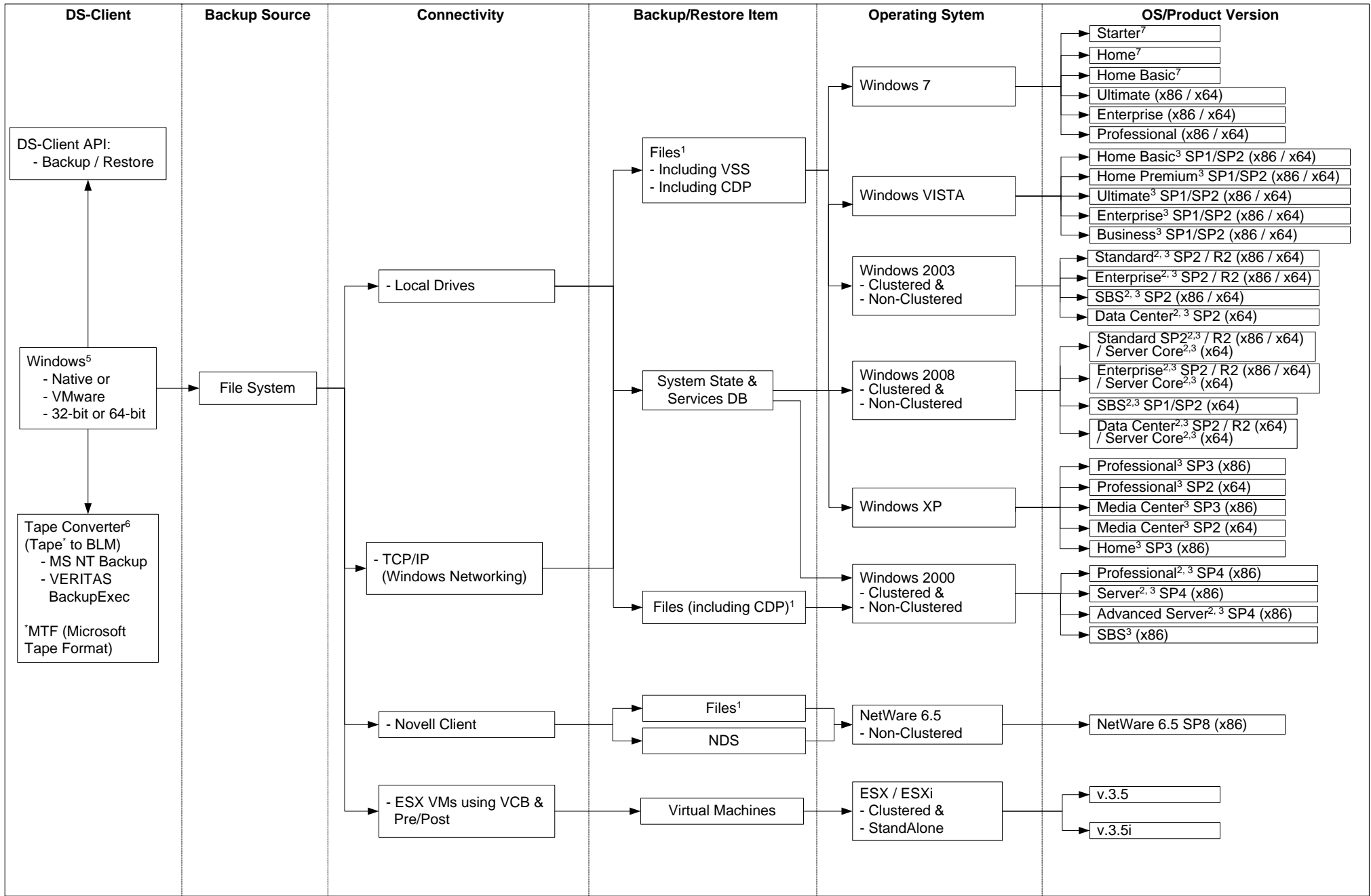
Product	Operating System	Version / Distribution	Database	Support
DS-System SLA	Windows 2003 (x86) <sup>1</sup>	- Standard SP1/SP2/R2 or - Enterprise SP1/SP2/R2	- MSDE 2000 - MS SQL Server 2000 SP4	Upgrade
			- SQL Server 2005 Express SP3 - MS SQL Server 2005 SP3 <sup>2</sup>	Install & Upgrade

<sup>1</sup> Operating System support available for **English language installation** only

<sup>2</sup> ASIGRA supports DS-System SLA running with a DB on MS SQL Server 2005 (Standard / Enterprise) standalone.

**Note:** - The installation is supported on physical machines and on Virtual Machines.

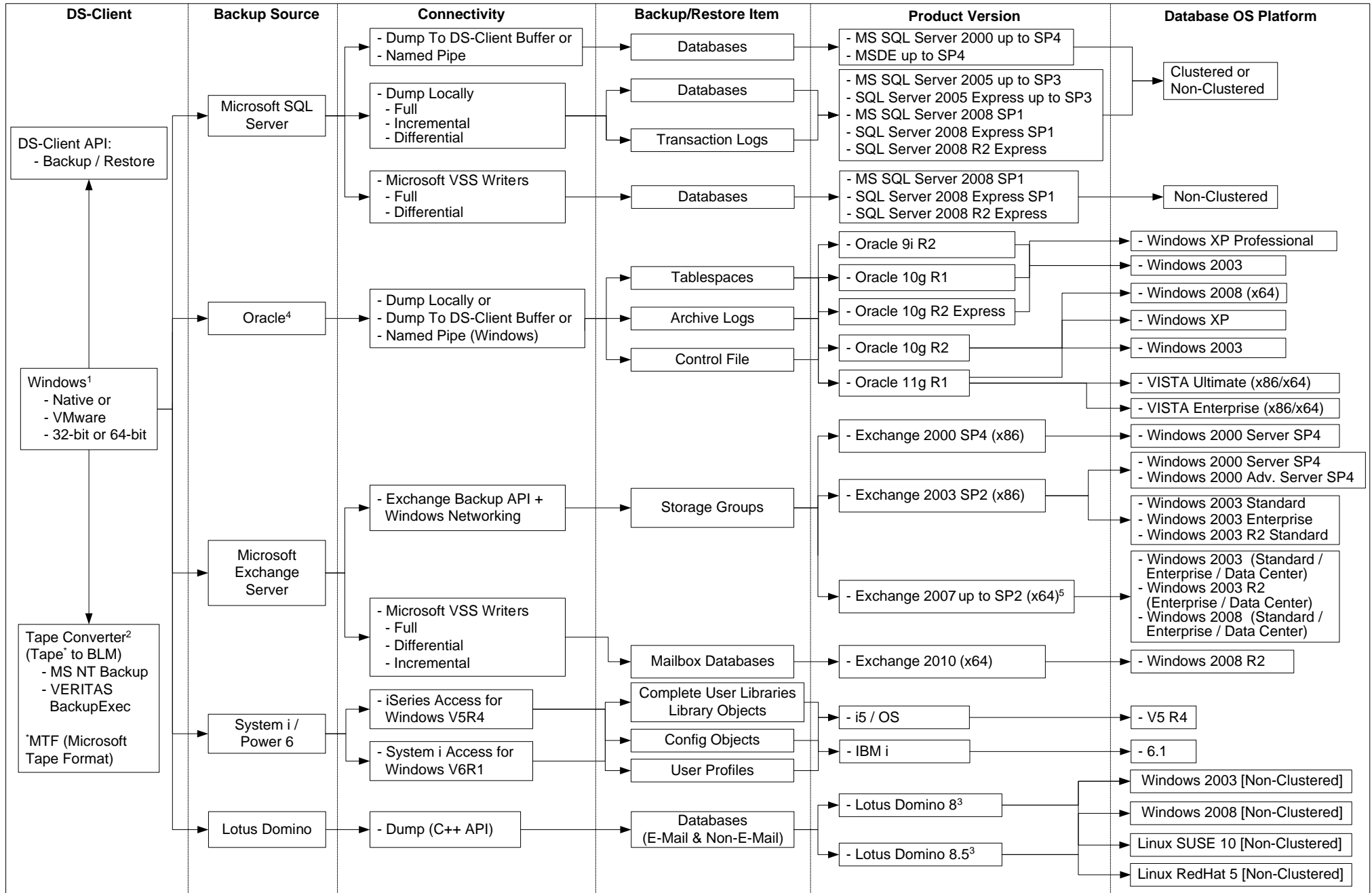
# ASIGRA Windows DS-Client Agentless Backup/Restore Support (1 of 3)



<sup>1</sup> File backup includes: File Data, Permissions, Extended File Attributes (Novell), POSIX names, Alternate Data Streams, Sparse Files, Encrypted Files and Junction Points  
<sup>2</sup> Active Directory Backup/Restore is supported by the DS-Client  
<sup>3</sup> Bare Metal Restore (BMR) to same or alternate hardware  
<sup>4</sup> BMR to same type of hardware

<sup>5</sup> The DS-Client can backup locally and agentless, on both native OS and Virtual Machine Installation, 32/64-bit architectures, provided that installation of the source is possible (e.g. Windows NT will not be installed on a 64-bit machine, Virtual Machines and 32/64-bit do not apply to System i, etc.)  
<sup>6</sup> Tape Converter functionality is not supported for DS-Clients running on Windows VISTA / Windows 7  
<sup>7</sup> Supported by DS-Mobile Client only

# ASIGRA Windows DS-Client Agentless Backup/Restore Support (2 of 3)



<sup>1</sup> The DS-Client can backup locally and agentless, on both native OS and Virtual Machine Installation, 32/64-bit architectures, provided that installation of the source is possible (e.g. Windows NT will not be installed on a 64-bit machine, Virtual Machines and 32/64-bit do not apply to System i, etc.)

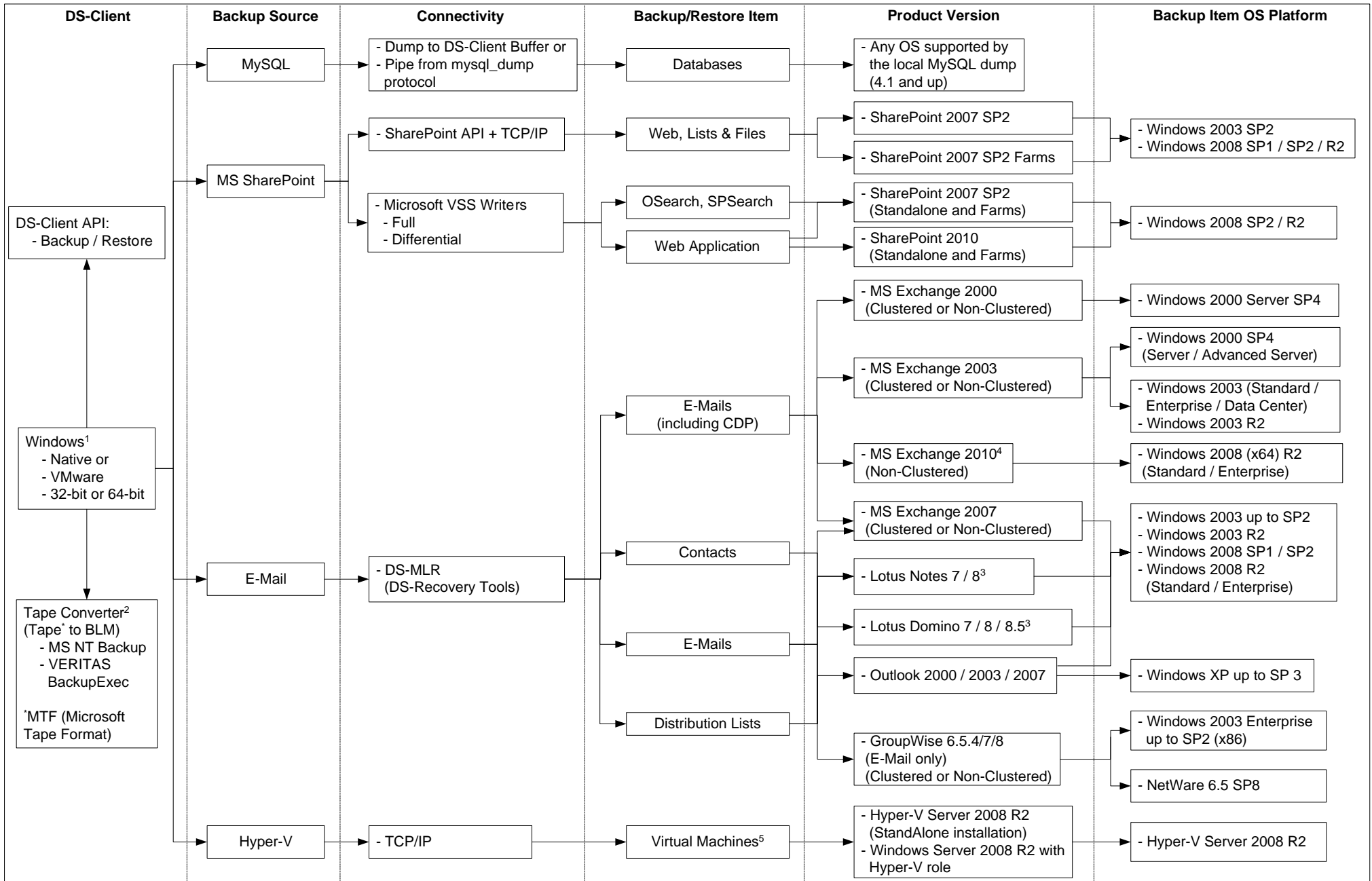
<sup>2</sup> Tape Converter functionality is not supported for DS-Clients running on Windows VISTA / Windows 7.

<sup>3</sup> With DB2 or NSF databases

<sup>4</sup> Oracle backup and restore is supported when Oracle is running on raw devices (ASM), as supported by Oracle.

<sup>5</sup> SCC and CCR configurations are supported.

# ASIGRA Windows DS-Client Agentless Backup/Restore Support (3 of 3)



<sup>1</sup> The DS-Client can backup locally and agentless, on both native OS and Virtual Machine Installation, 32/64-bit architectures, provided that installation of the source is possible (e.g. Windows NT will not be installed on a 64-bit machine, Virtual Machines and 32/64-bit do not apply to System i, etc.)

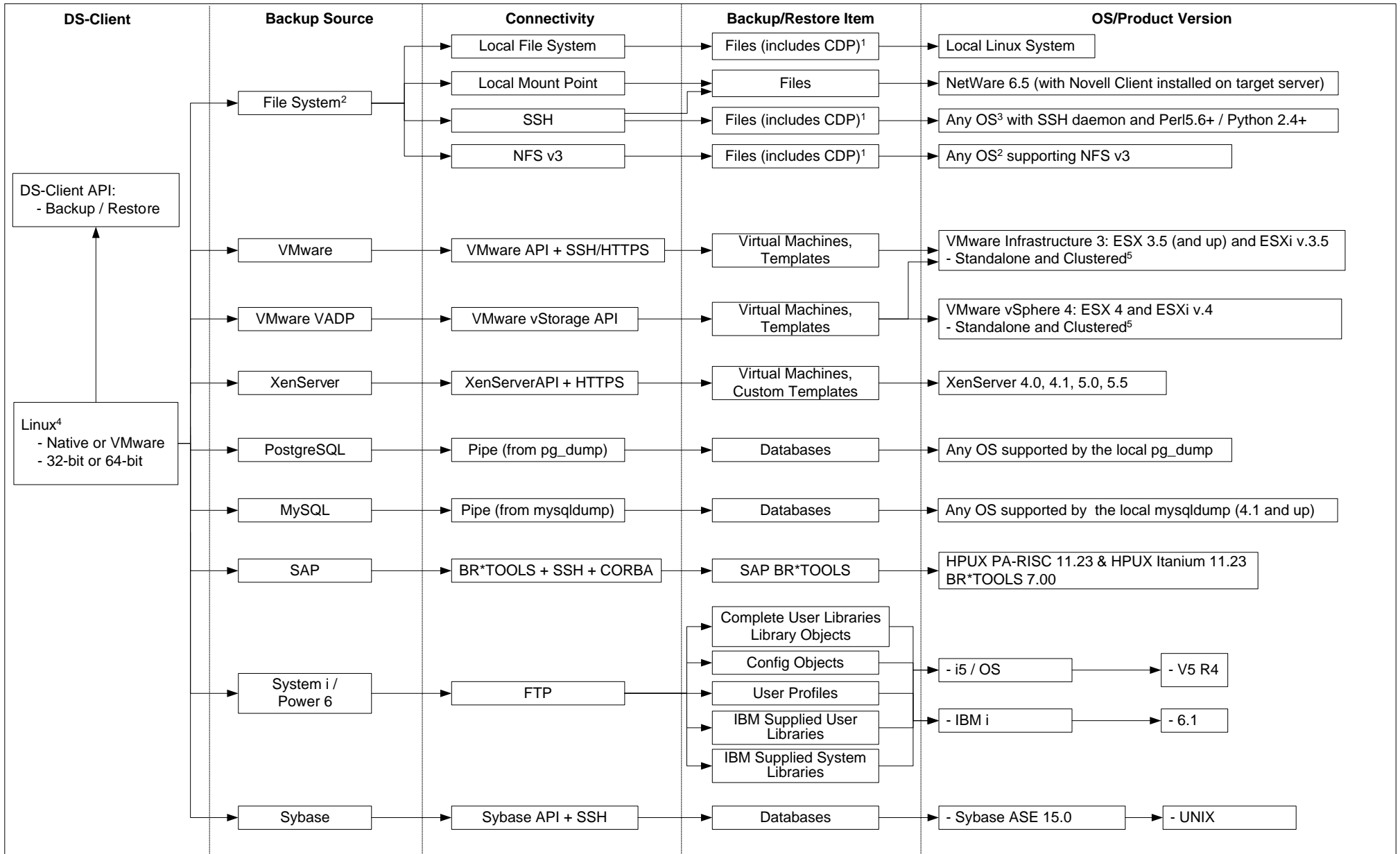
<sup>2</sup> Tape Converter functionality is not supported for DS-Clients running on Windows VISTA

<sup>3</sup> With DB2 or NSF databases

<sup>4</sup> CDP is not supported on MS Exchange 2010

<sup>5</sup> Virtualization with Hyper-V can be done in 2 ways: 1) By installing the Hyper-V ROLE as part of a Windows Server 2008 R2 installation, or 2) by installing the Hyper-V Server itself.

# ASIGRA Linux DS-Client Agentless Backup/Restore Support (1 of 4)



<sup>1</sup> For Local/NFS/SSH backup, the Linux DS-Client supports Unix permissions, POSIX file names and soft links. For CIFS backup, the DS-Client will backup data and ACL.

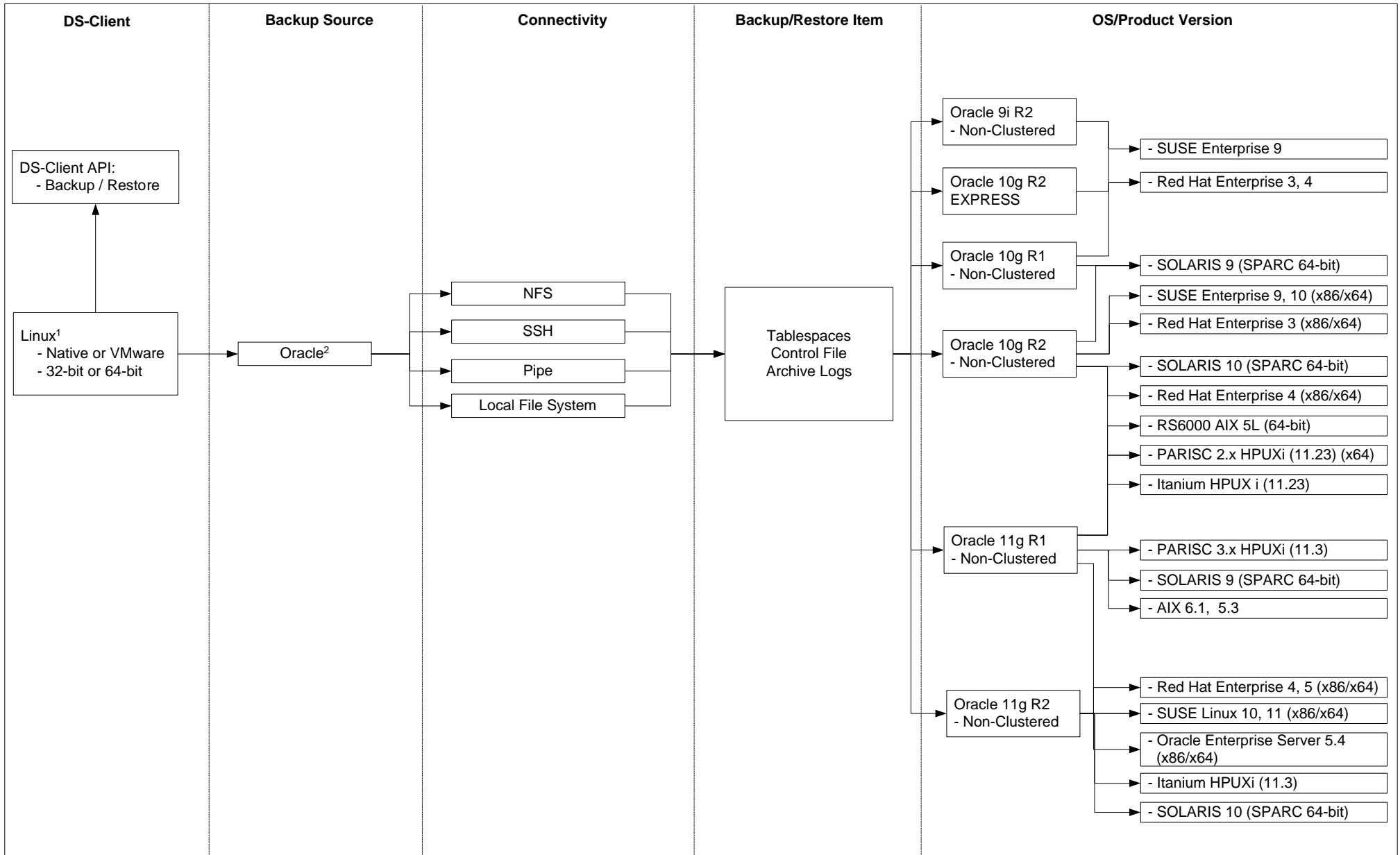
<sup>2</sup> NFS Backup is actively tested on Linux, Solaris, and HP-UX.

<sup>3</sup> SSH Backup is actively tested on Linux, Solaris, HP-UX, and AIX.

<sup>4</sup> The DS-Client can backup locally and agentless, on both native OS and VMware Installation, 32-bit and 64-bit architectures, provided that installation of the source is possible (e.g. VMware and 32/64-bit do not apply to System i)

<sup>5</sup> For clustered ESX servers, VMotion must not move the Virtual Machines during the backup activity.

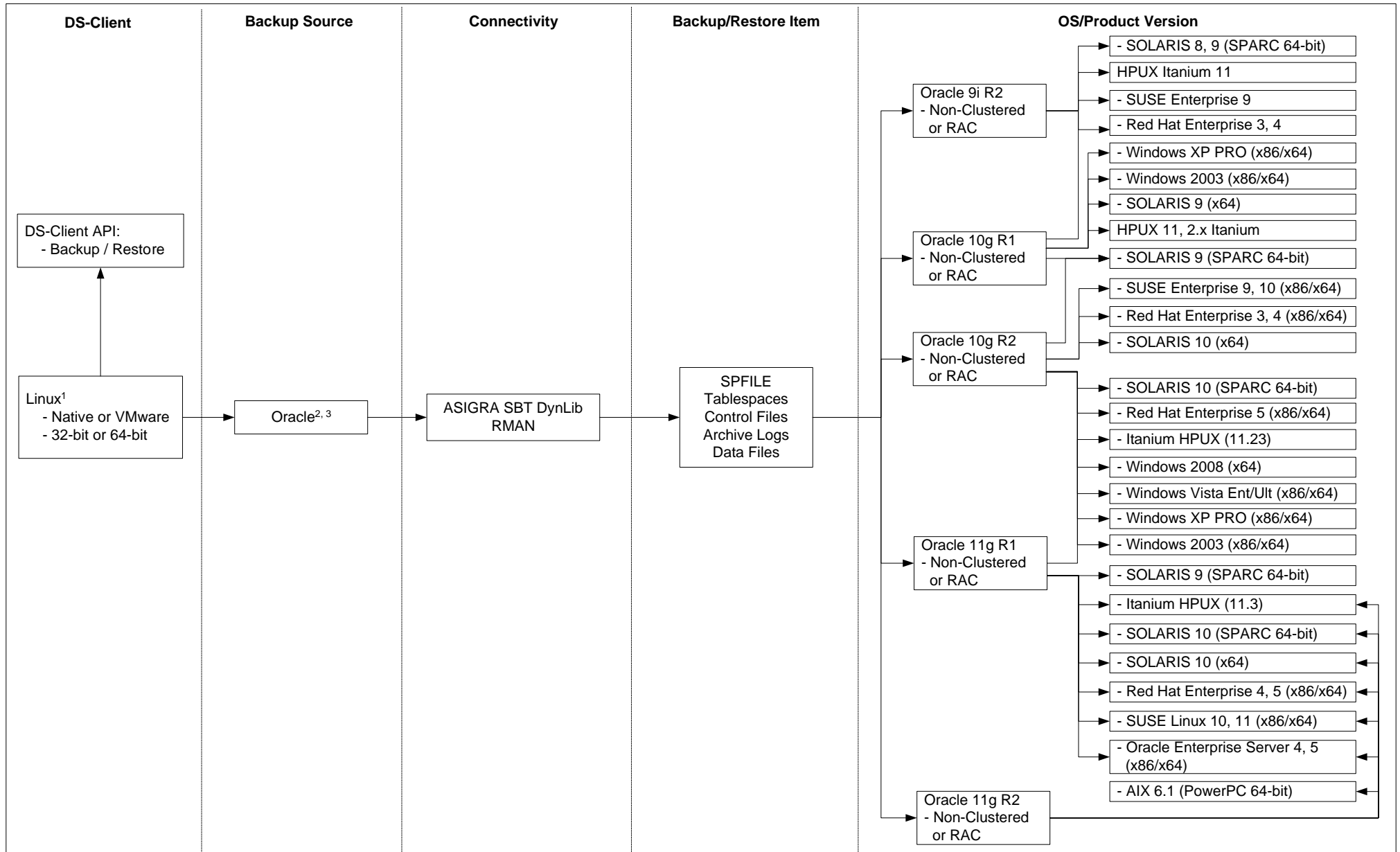
# ASIGRA Linux DS-Client Agentless Backup/Restore Support (2 of 4)



<sup>1</sup> The DS-Client can backup locally and agentless, on both native OS and VMware Installation, 32-bit and 64-bit architectures, provided that installation of the source is possible (e.g. VMware and 32/64-bit do not apply to System i)

<sup>2</sup> Oracle backup and restore is supported when Oracle is running on raw devices (ASM), as supported by Oracle.

# ASIGRA Linux DS-Client Agentless Backup/Restore Support (3 of 4)

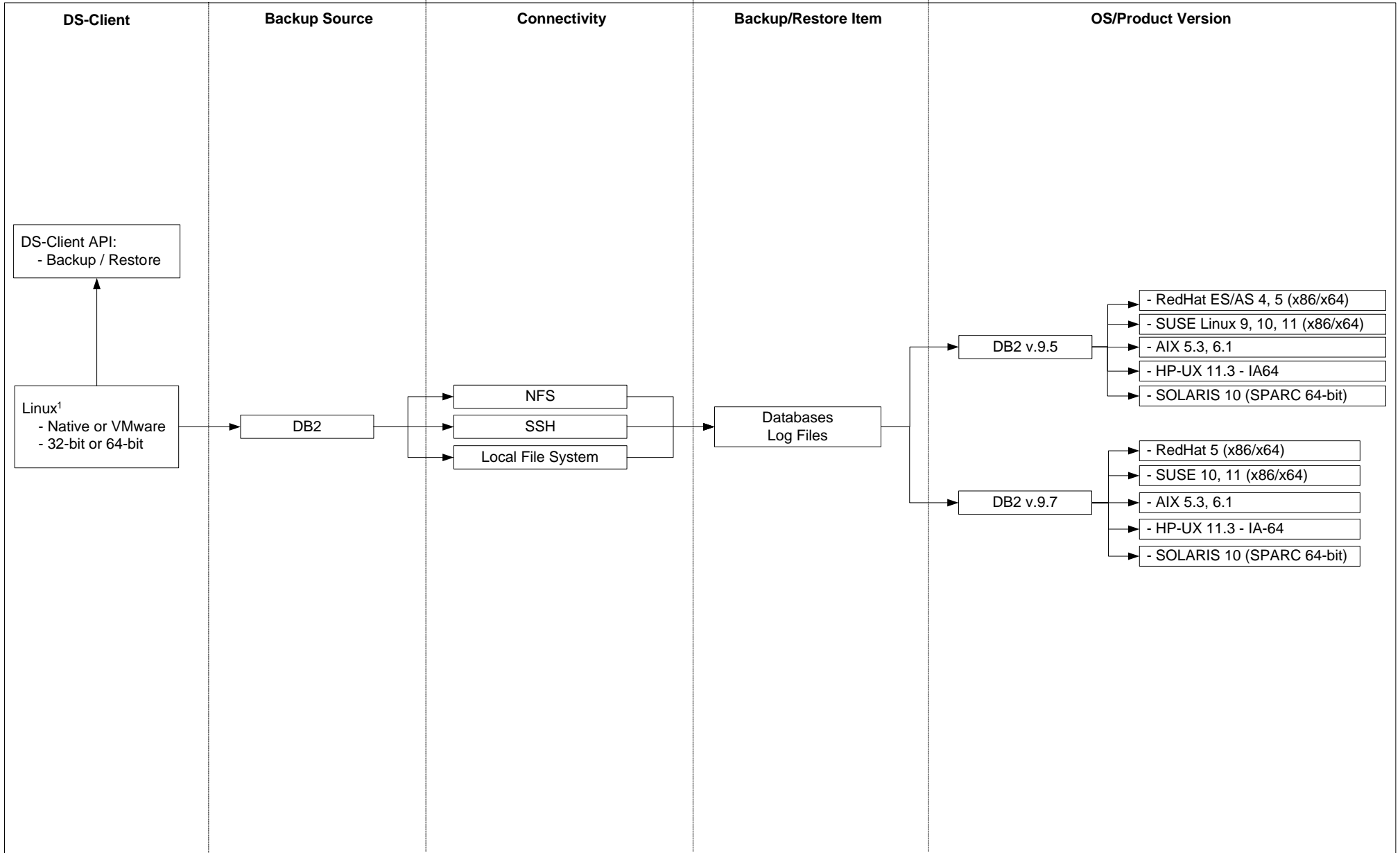


<sup>1</sup> The DS-Client can backup locally and agentless, on both native OS and VMware Installation, 32-bit and 64-bit architectures, provided that installation of the source is possible (e.g. VMware and 32/64-bit do not apply to System i)

<sup>2</sup> Oracle backup and restore is supported when Oracle is running on raw devices (ASM), as supported by Oracle.

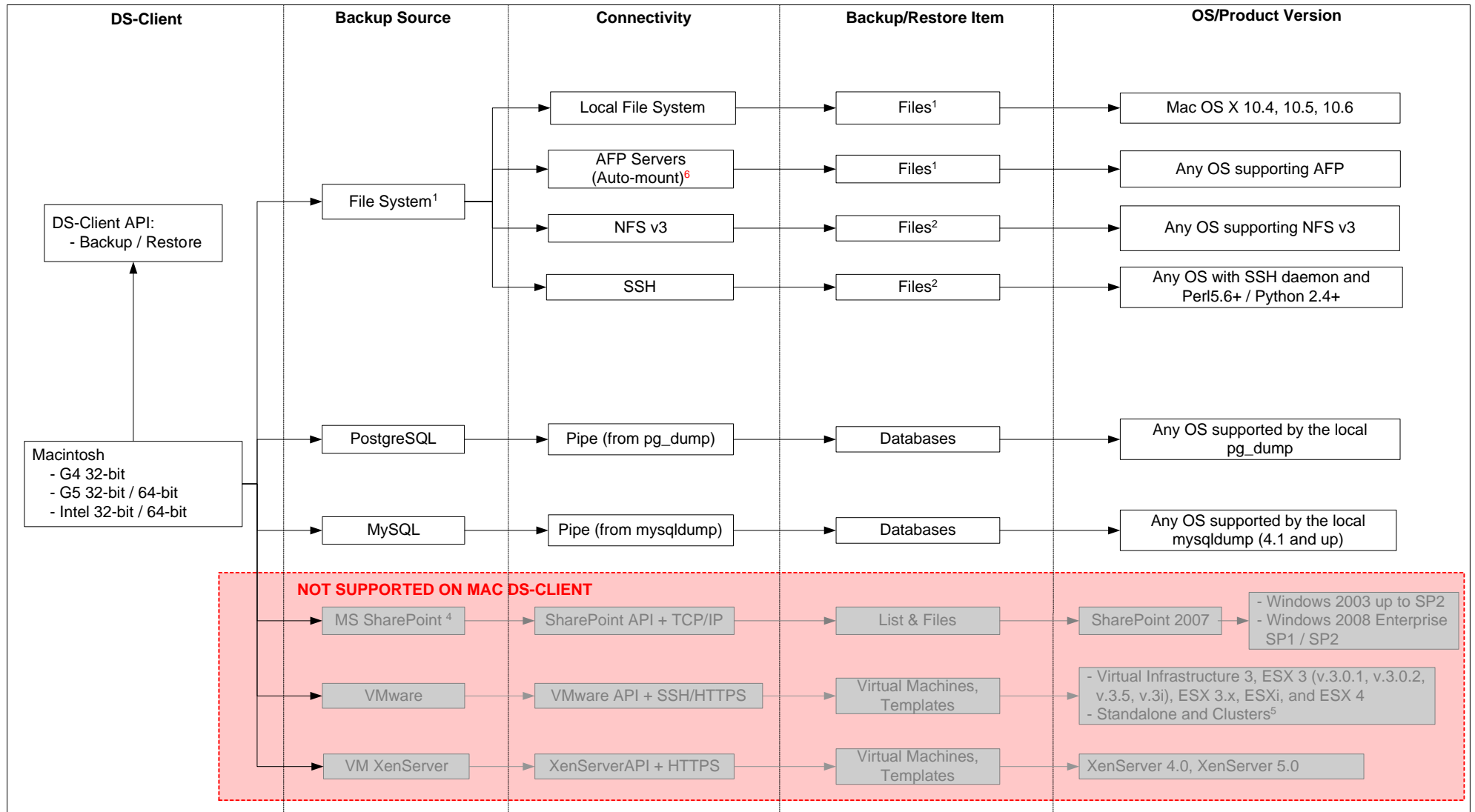
<sup>3</sup> Oracle-SBT (System Backup to Tape) interface: Data is sent to DS-System instead of tape. It is meant to be used for incremental backup functionality (incremental differential and incremental cumulative, etc.). It supports almost all RMAN support, as provided/supported by Oracle.

# ASIGRA Linux DS-Client Agentless Backup/Restore Support (4 of 4)



<sup>1</sup> The DS-Client can backup locally and agentless, on both native OS and VMware Installation, 32-bit and 64-bit architectures, provided that installation of the source is possible (e.g. VMware and 32/64-bit do not apply to System i)

# ASIGRA Mac DS-Client Agentless Backup/Restore Support



<sup>1</sup> Local and AFP backup supports Unix permissions, POSIX file names, soft links and resource forks

<sup>2</sup> For NFS/SSH backup, the Mac DS-Client supports Unix permissions, POSIX file names and soft links

<sup>3</sup> For CIFS backup, the DS-Client will backup data and basic ACL

<sup>4</sup> MS SharePoint, VMware, and XenServer backup sets are not currently supported on MAC DS-Clients

<sup>5</sup> For clustered ESX servers, VMotion must not move the Virtual Machines during the backup activity.

<sup>6</sup> Auto-mount available on DS-Client installed on Mac OS X 10.4 and 10.5. Auto-mount NOT available on Mac OS X 10.6 or higher.